

# Installing Acti NVR

[Installer Download Link](#)

1. Click on [Step 2: Install NVR Server Main Program](#) link

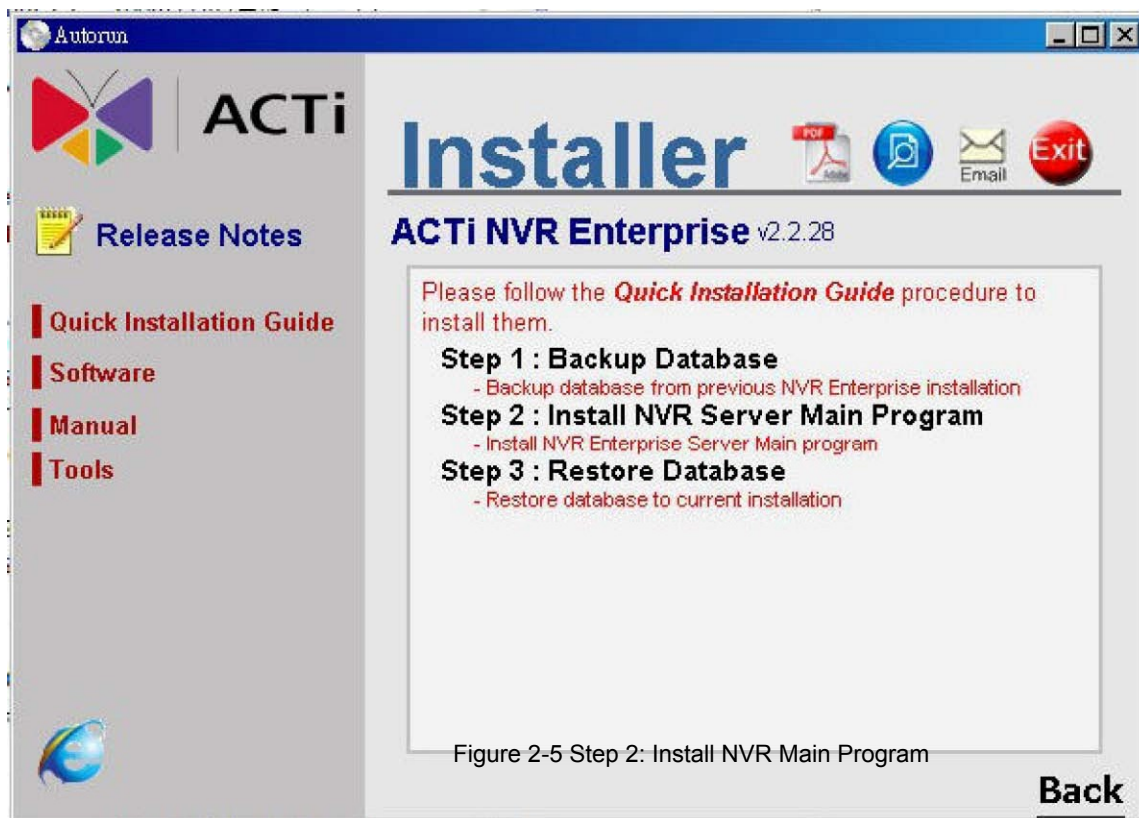


Figure 2-5 Step 2: Install NVR Main Program

Install prerequisites for ACTi NVR Server. NVR will install SQL 2005 SP2 if the database instance is not found in the machine.

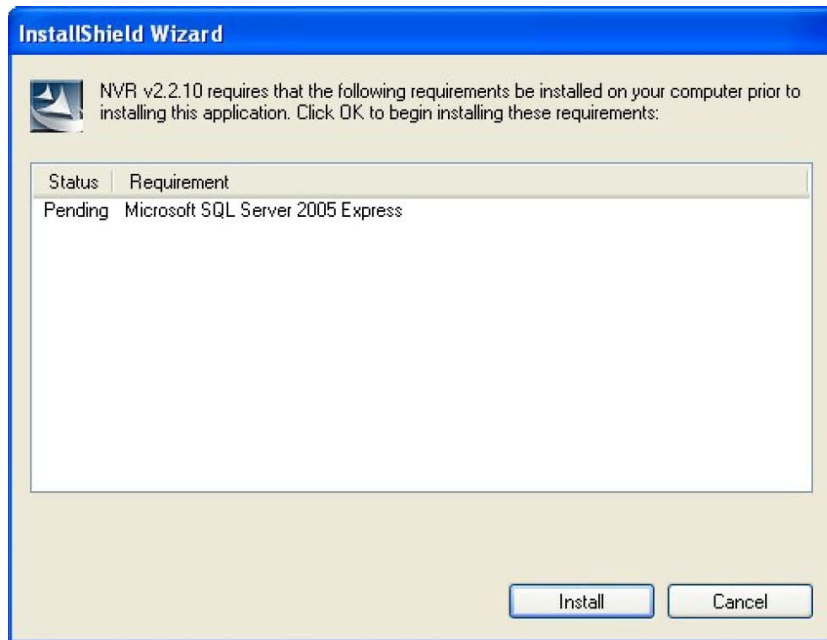


Figure 2-6 Install SQL 2005 SP2

## 2. Install SQL 2005 SP2 for ACTi NVR Server

Figure 2-6 Install SQL 2005 SP2



**IMPORTANT:** If you use SQL 2005, please upgrade to SQL 2005 SP2



**IMPORTANT:** You can also refer to Un-Install SQL 2005 section on how to remove SQL 2005 successfully.

### 3. Install SQL 2005 SP2 Progress

SQL 2005 SP2 installation progress..

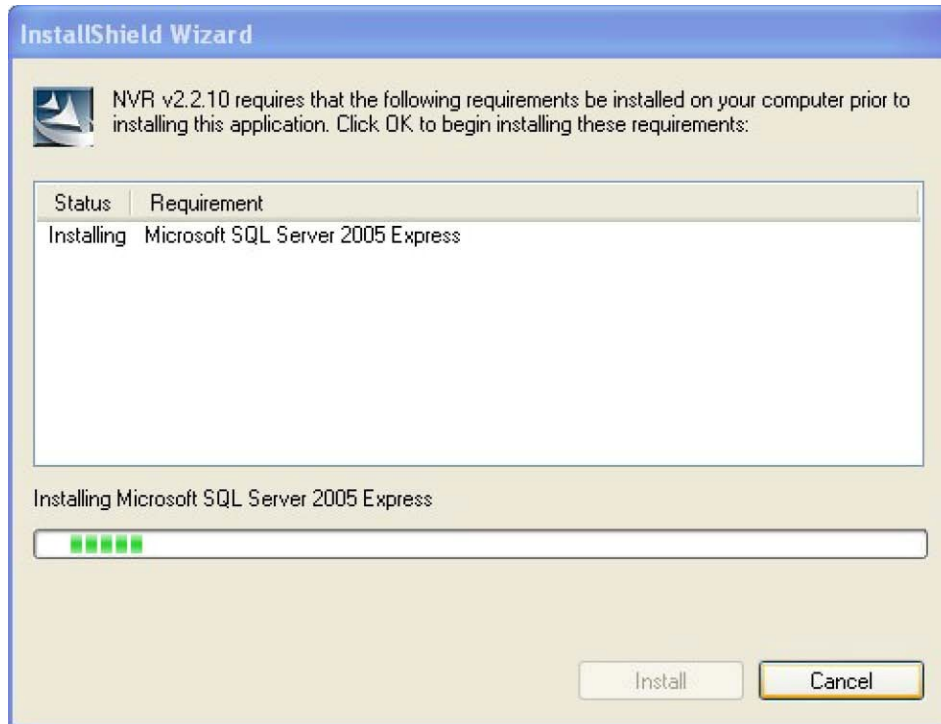


Figure 2-7 SQL 2005 SP2 installation progress

#### 4. Disable UAC Setting

You will need to disable UAC setting if you will install NVR server on the Vista machine.

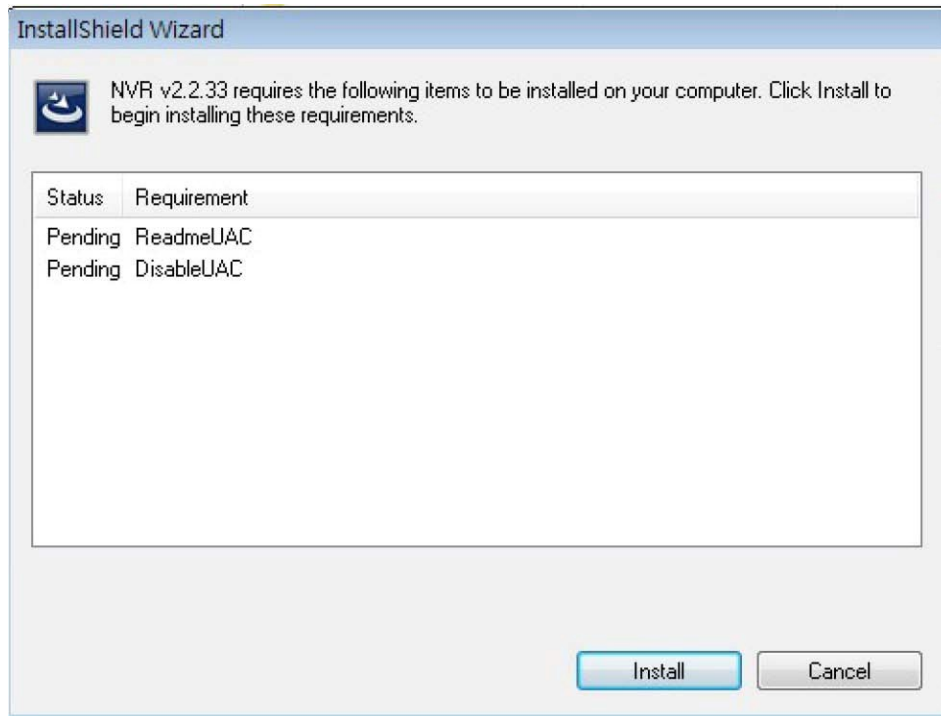
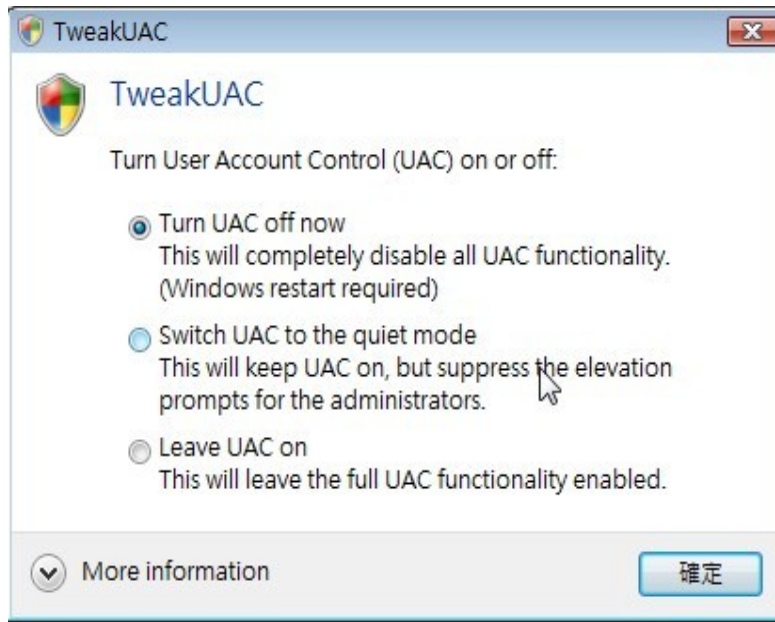


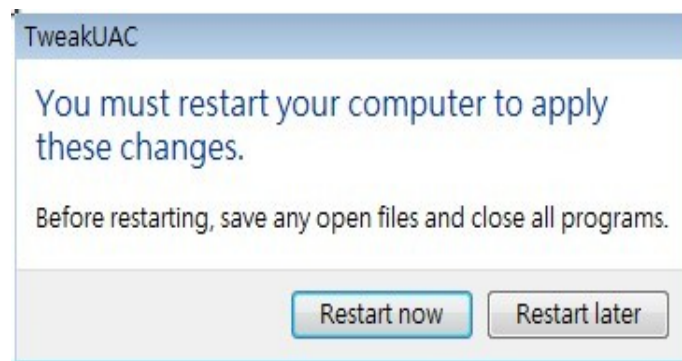
Figure 2-8 Remove UAC setting

 **IMPORTANT:** If you want to install NVR server on the Vista, you **MUST** remove UAC setting, then you can install on it

1. Click **Install** button to start this program



2. Please select the radio of “**Turn UAC off now**” to remove UAC setting.



3. After you run the program, the system will ask you to reboot. Please click “restart now” to reboot.



**IMPORTANT:** After rebooting, please run the NVR install program again.

## 5. Install NVR Main Program

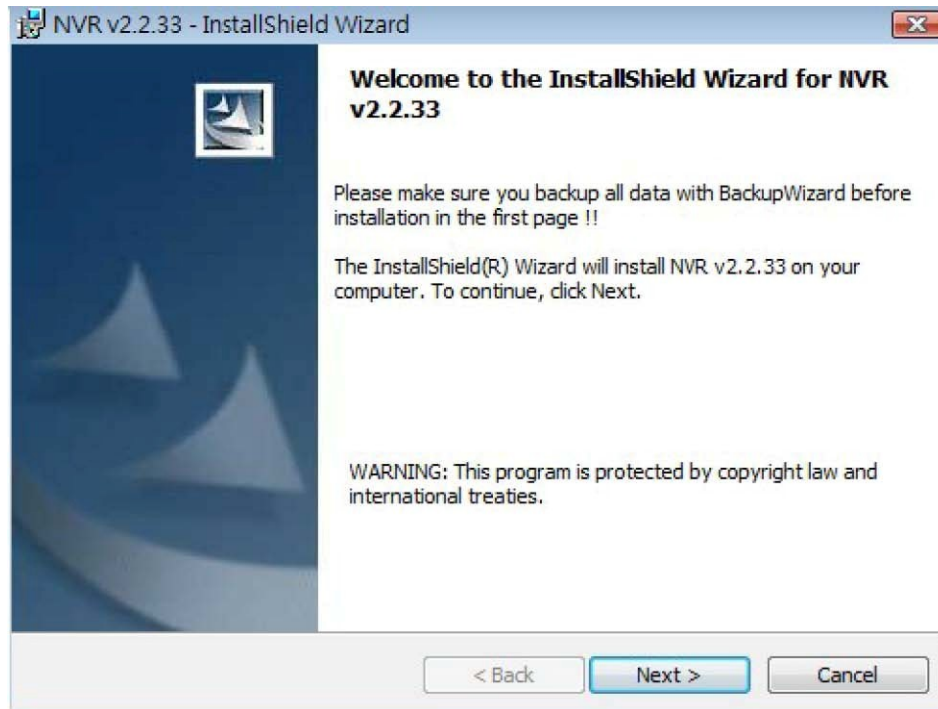


Figure 2-11 Installing ACTi NVR Main Program

1. Click **Next** button to proceed the installation

## 6. Default Installation Path: C:\Program Files\NVR

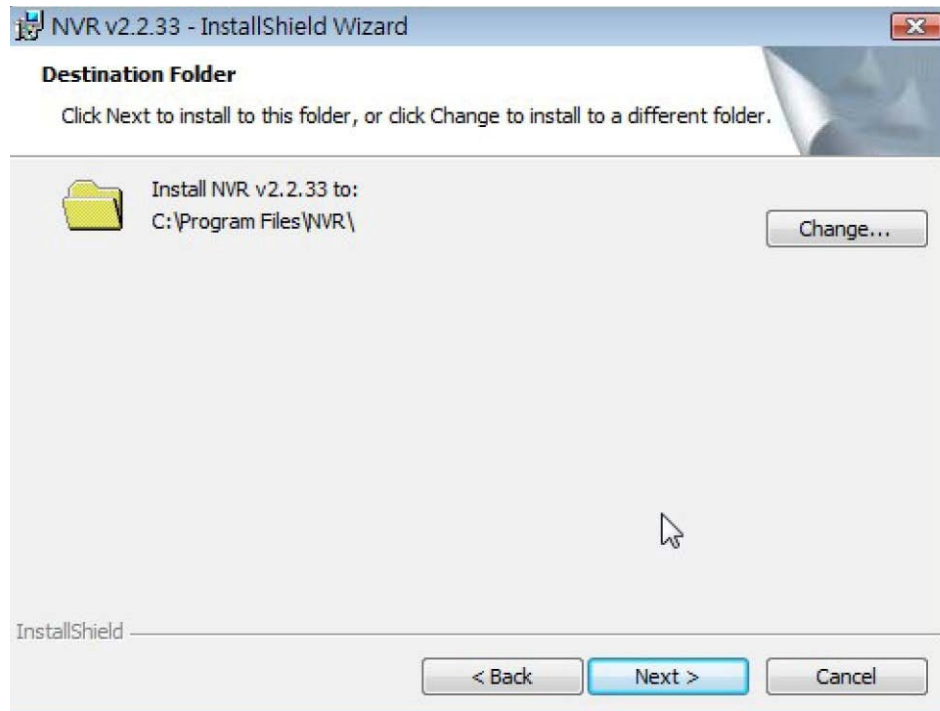


Figure 2-12 Default Installation Path: C:\Program Files\NVR

1. Click **Next >** button to apply default path to install
2. Click **Change** button to select destination installation path



**NOTE:** Default Path C:\Program Files\NVR is recommended..

## 7. Install NVR Components

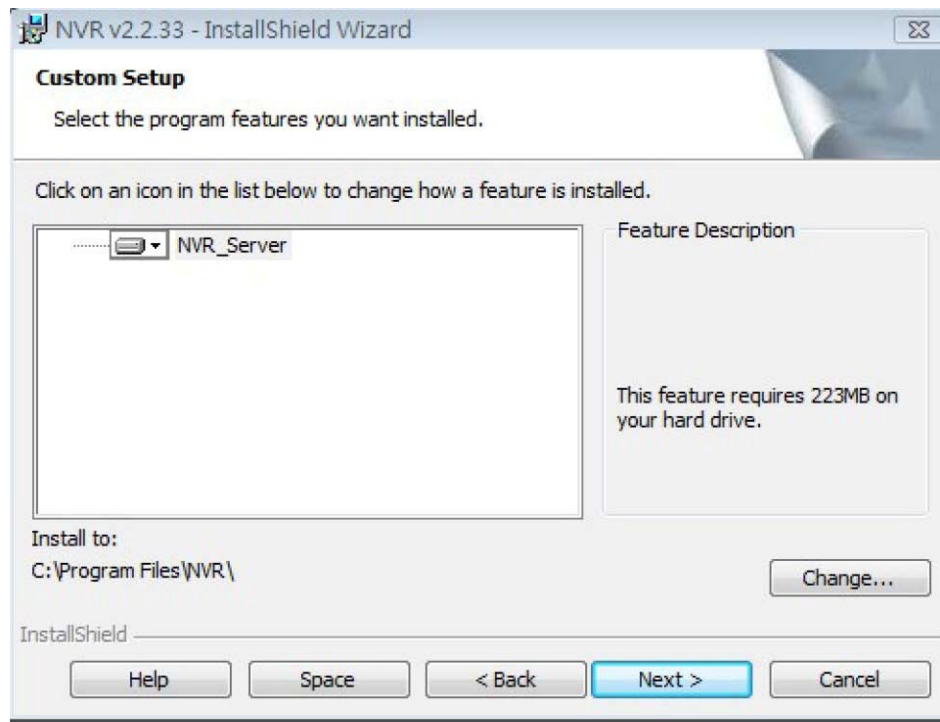


Figure 2-13 Install NVR Components

1. Select Complete and Click Next button to install ACTi NVR Server. ACTi NVR Server includes:
  1. Win32 Service: Recorder, Event Manager, Storage Manager and Streaming Engine
  2. NVR Workstation: Active Monitor, Active Player, Active Map and Active Setup
  3. NVR Web Client: Web Client programs, Web Server programs



**NOTE:** Select Complete to install ACTi NVR Server. Select Custom to install ACTi NVR Workstation.



**IMPORTANT:** Please refer to Web Server (IIS) Configuration before you run NVR Web Client



## 8. Connecting to Database and Importing Default Value to Database

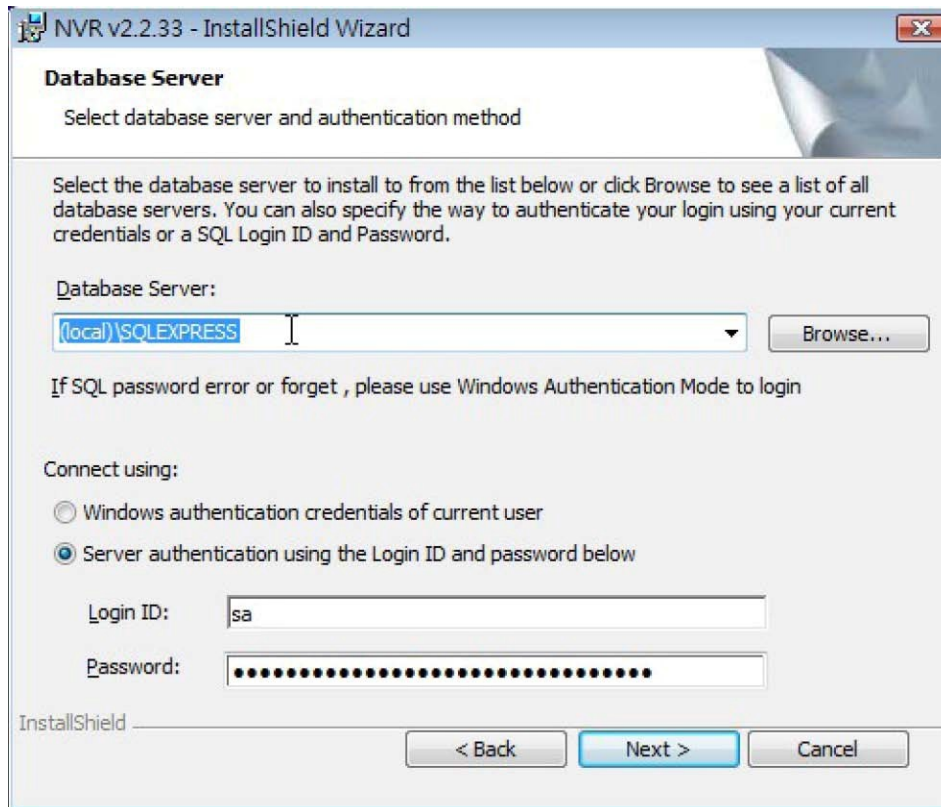




Figure 2-14 Connecting to Database and Importing Default Value to Database

1. Click Next button to proceed to default value importing. Please do not change default account / password.

	<b>IMPORTANT:</b> Do not change the default account / password. If you have one's own SA password, please use that password.
	<b>IMPORTANT:</b> If You forgot the password of SA, please select "Windows authentication"

9. NVR Server Installation

10. NVR Server Installation Completed

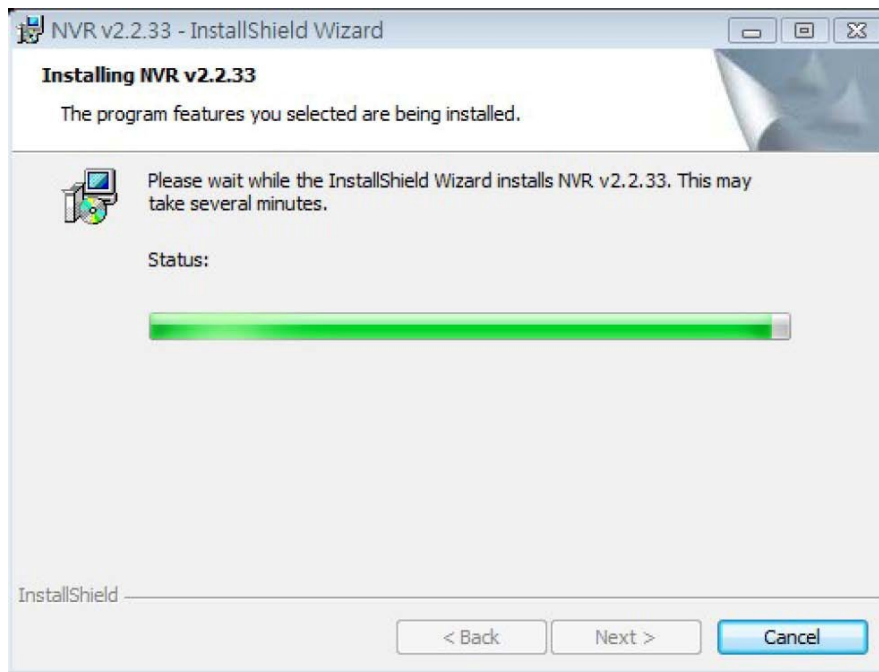


Figure 2-15 ACTi NVR Server Installation

Figure 2-16 NVR Server Installation Complete

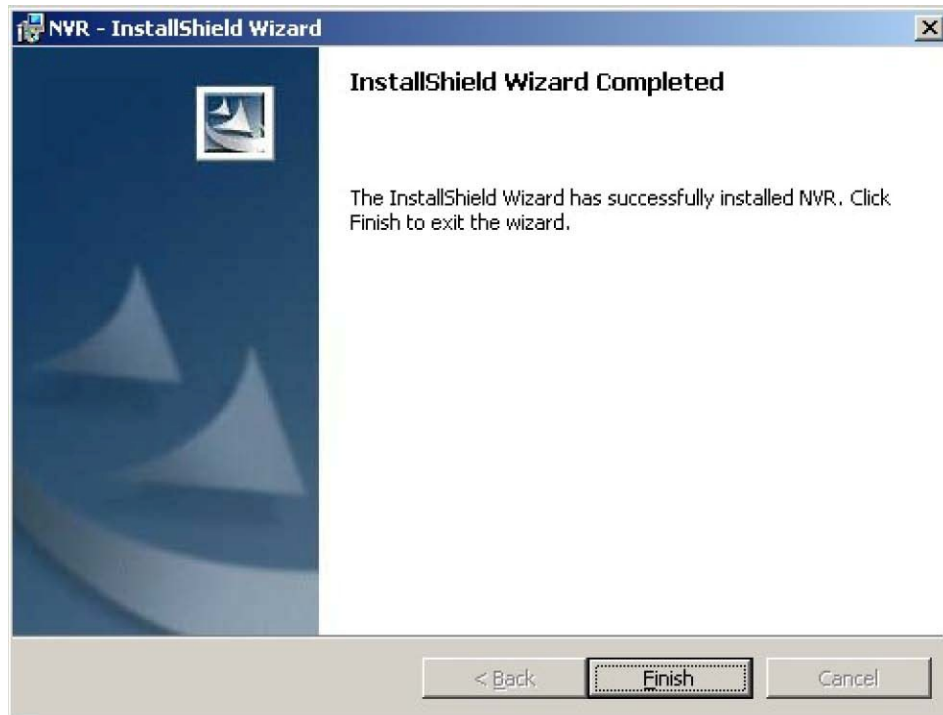


Figure 2-16 NVR Server Installation Complete

1. Click Finish button to complete NVR Server Installation

## 11. Restart System

